

NOTE:  
 1. DIMENSIONS ARE APPROXIMATE +/-1" (25).  
 2. DIMENSIONS IN ( ) ARE METRIC.

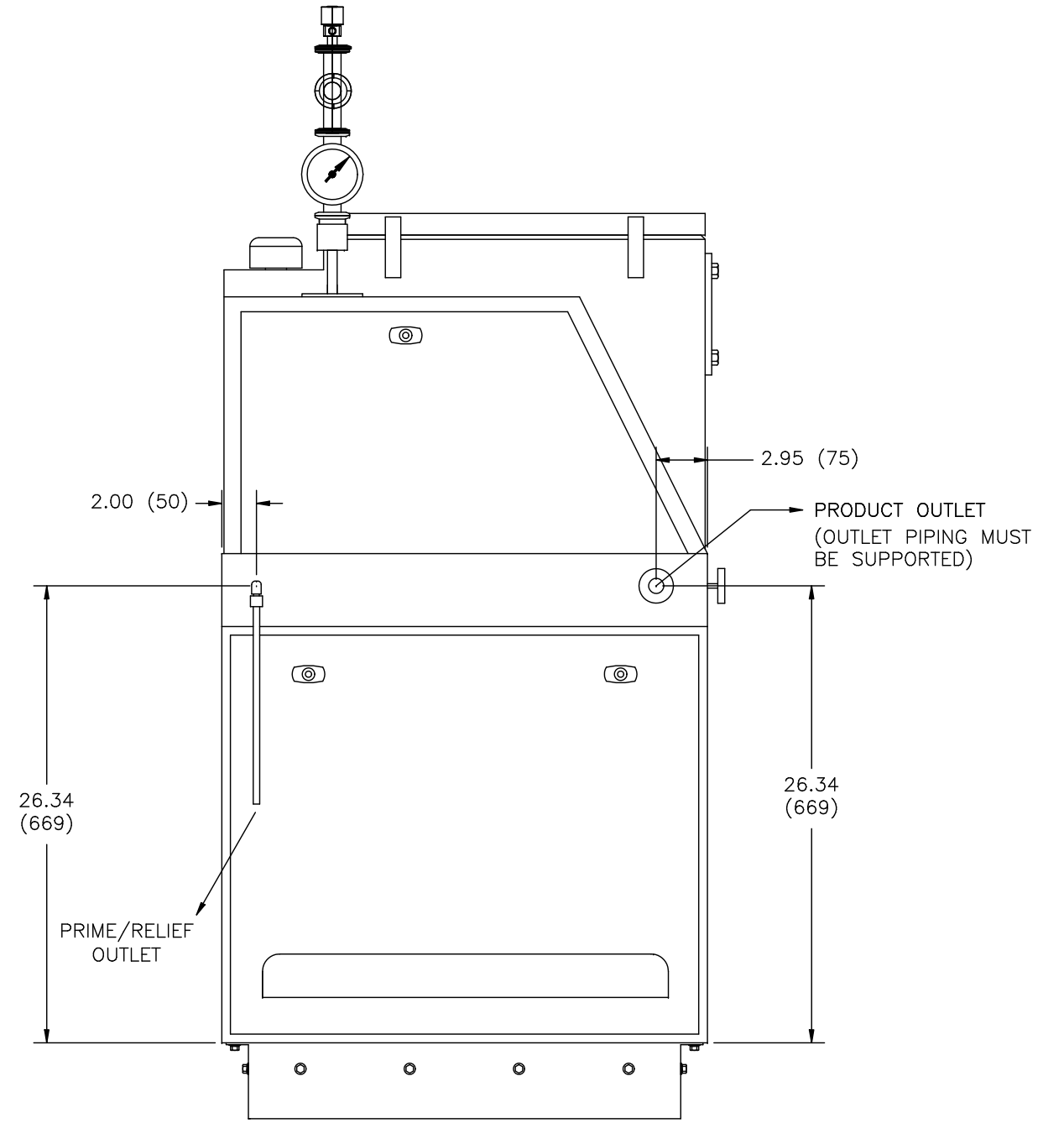
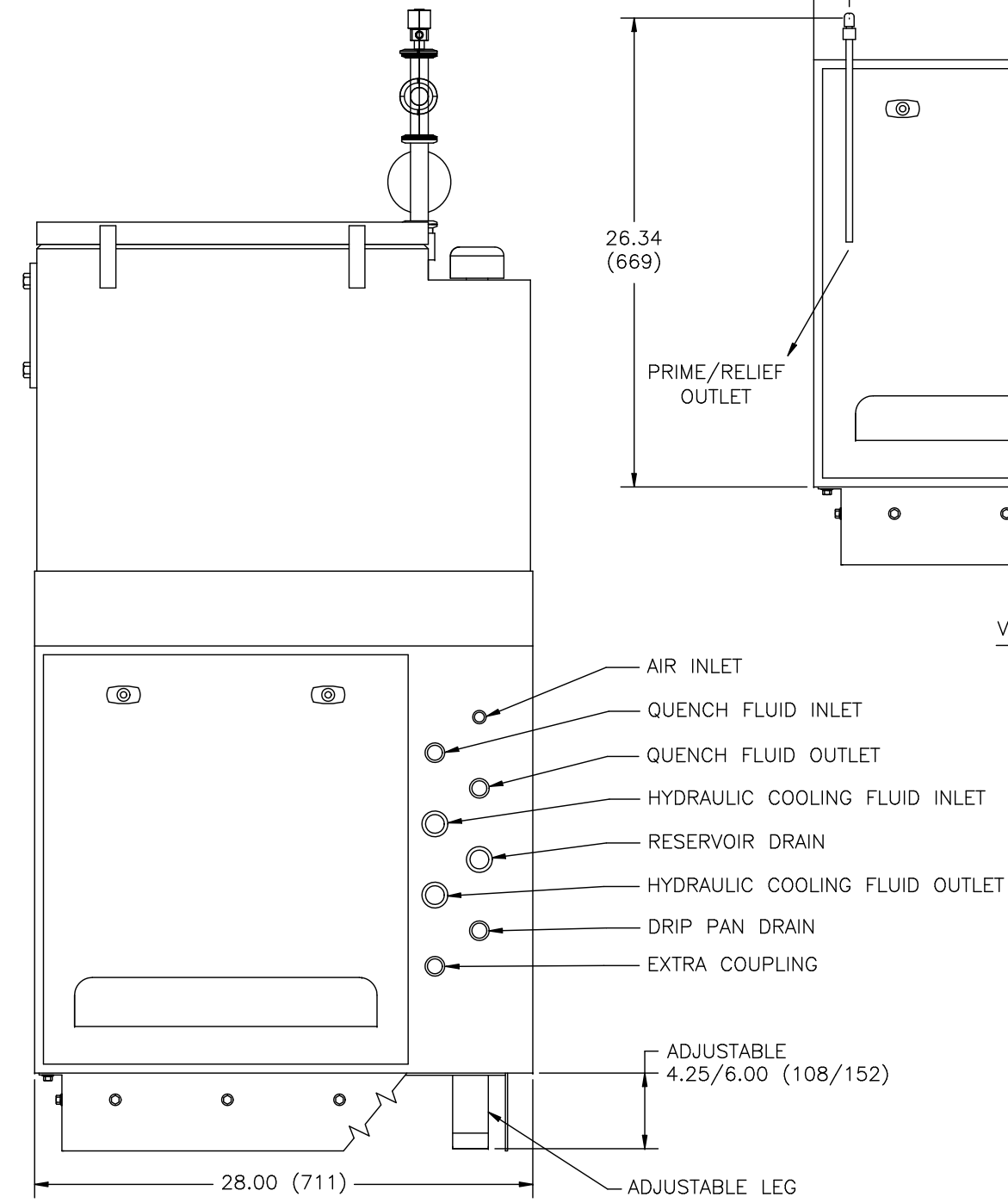
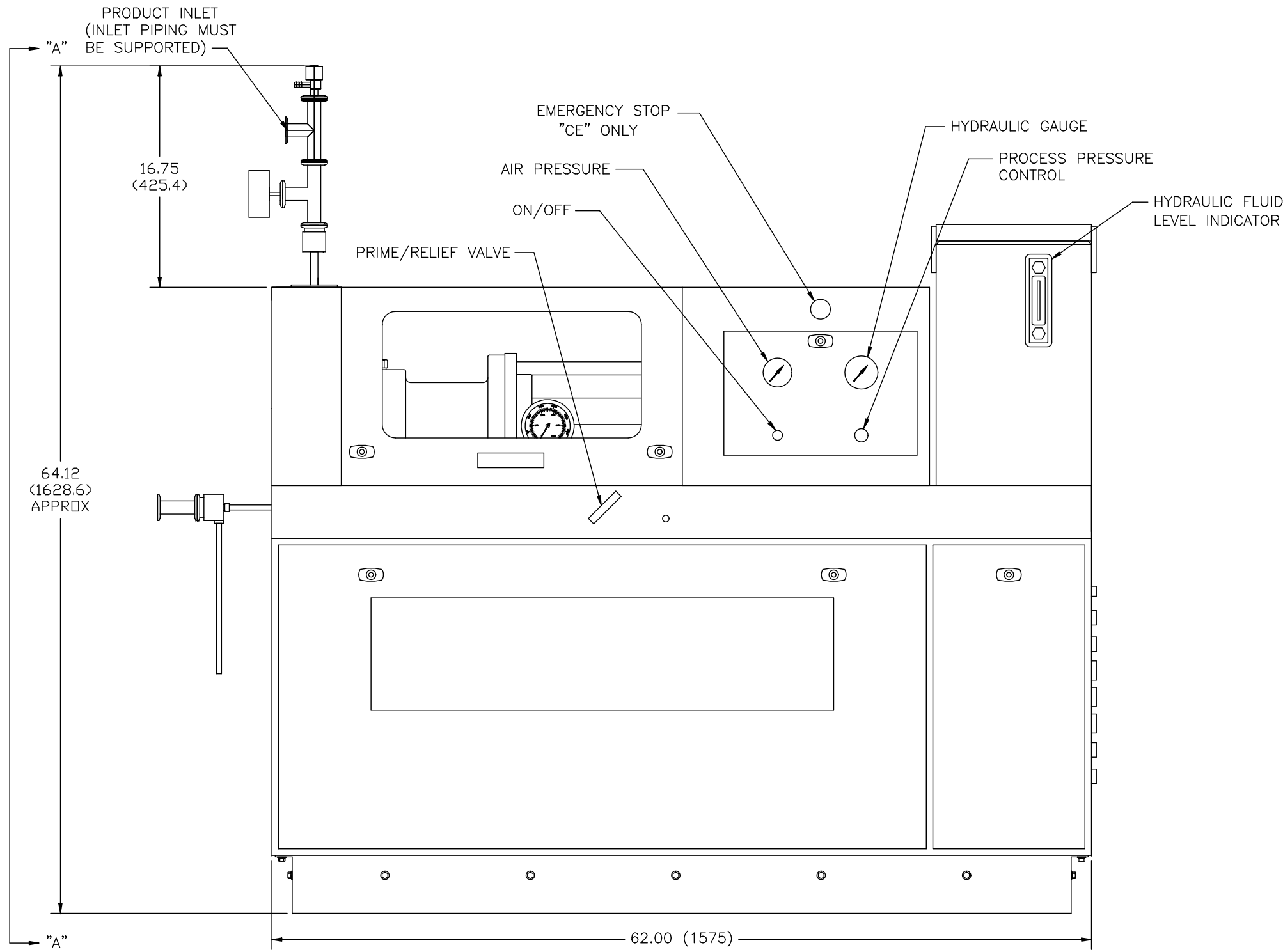
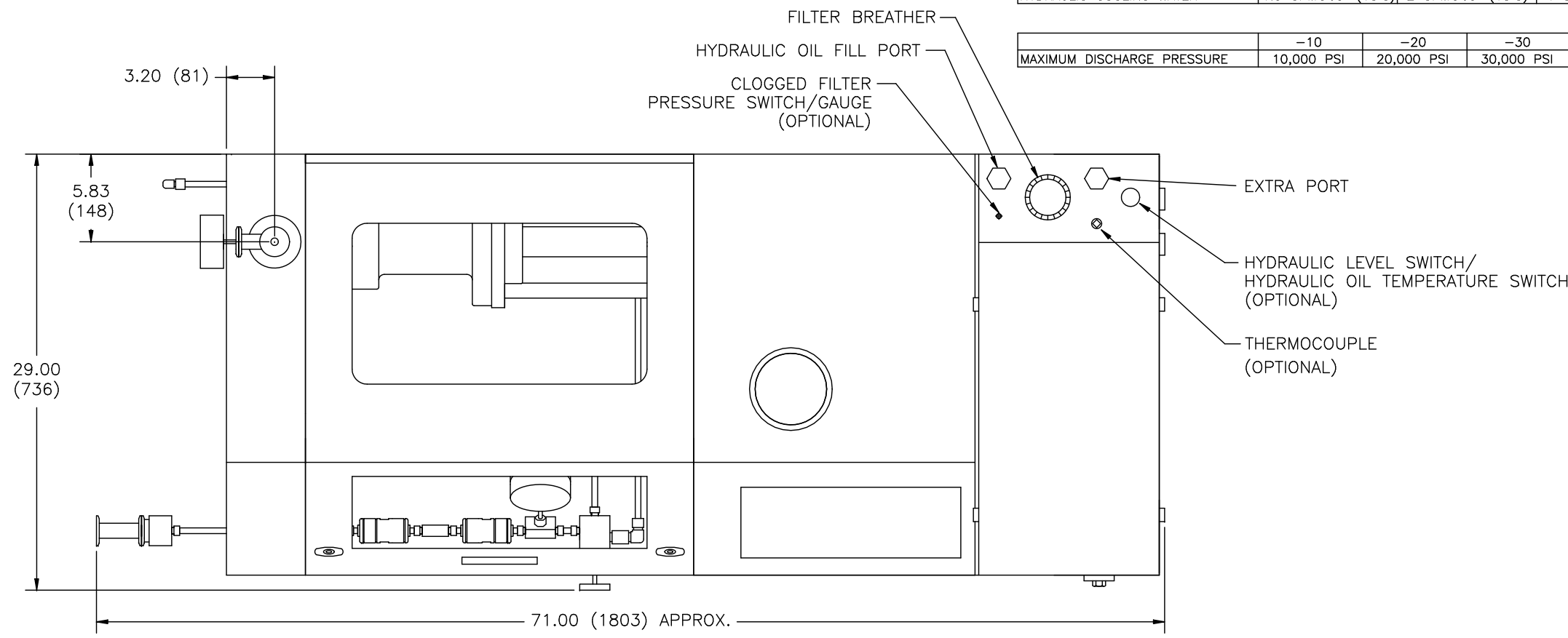
SPECIFICATIONS				
	7115	7125	7150	
MAXIMUM HYDRAULIC PRESSURE	3,000 PSI	3,000 PSI	3,000 PSI	
APPROXIMATE WEIGHT (WITHOUT OIL)	1,400 LBS	1,500 LBS	1,800 LBS	
APPROXIMATE WEIGHT (WITH OIL)	1,650 LBS	1,750 LBS	2,050 LBS	
HYDRAULIC RESERVOIR CAPACITY	30 GAL	30 GAL	30 GAL	
HYDRAULIC COOLING WATER	1.5 GPM@65° (18°C)	2 GPM@65° (18°C)	4 GPM@65° (18°C)	
MAXIMUM DISCHARGE PRESSURE	-10	-20	-30	-40
	10,000 PSI	20,000 PSI	30,000 PSI	40,000 PSI

CONNECTIONS	
HYDRAULIC COOLING FLUID INLET&OUTLET	3/4" FNPT
AIR INLET	1/4" FNPT
RESERVOIR DRAIN	3/4" FNPT
QUENCH FLUID INLET	1/2" FNPT
QUENCH FLUID OUTLET	1/2" FNPT
DRIP PAN DRAIN	3/4" FNPT
EXTRA COUPLING	1/2" FNPT
PRODUCT INLET	1" TC
PRODUCT OUTLET	1" TC
PRIMING/RELIEF OUTLET	3/8" TUBE

MOTOR DATA			
	7115	7125	7150
HP	15	25	50
FRAME SIZE	254 TC	284 TC	326 TC
VOLTS	230/460	230/460	230/460
AMPS	38/19	60/30	118/57
RPM	1760	1760	1760
HZ	60	60	60
PHASE	3	3	3

REV	ZN	ECN NO.	DESCRIPTION	BY	DATE
A	-	99-019	REVISED PER ECN	JR	5-20-99
B	-	99-041	REVISED PER ECN	JR	9-24-99
C	-	00-017	REVISED PER ECN	JR	3-31-00
D	-	04-85	ADDED AIR PURGE VALVE	WPS	3-29-05

- DATA ARE FOR TEFC & EXPLOSION PROOF ELECTRIC MOTORS.  
 - EXPLOSION PROOF ELECTRIC MOTORS ARE CLASS 1, DIVISION 1, GROUP D.



VIEW "A"- "A"

DUPLICATION OR DISSEMINATION WITHOUT AUTHORIZATION PROHIBITED  
 CONFIDENTIAL AND PROPRIETARY PROPERTY OF:

**Microfluidics** 30 OSSISPEE RD.  
 P.O. BOX 9101  
 NEWTON, MA 02464-9101 USA

SCALE: NONE TOLERANCES: X = ±1/2" XX = ±1/32" XXX = ±.005"  
 DATE: 1-19-99 .XX = ±.01 .XXX = ±.005

DRAWN BY JR F. N. 12920D

**OUTLINE M700 1 PUMP**

MATERIAL: DRAWING NUMBER: D-12920 REV: D