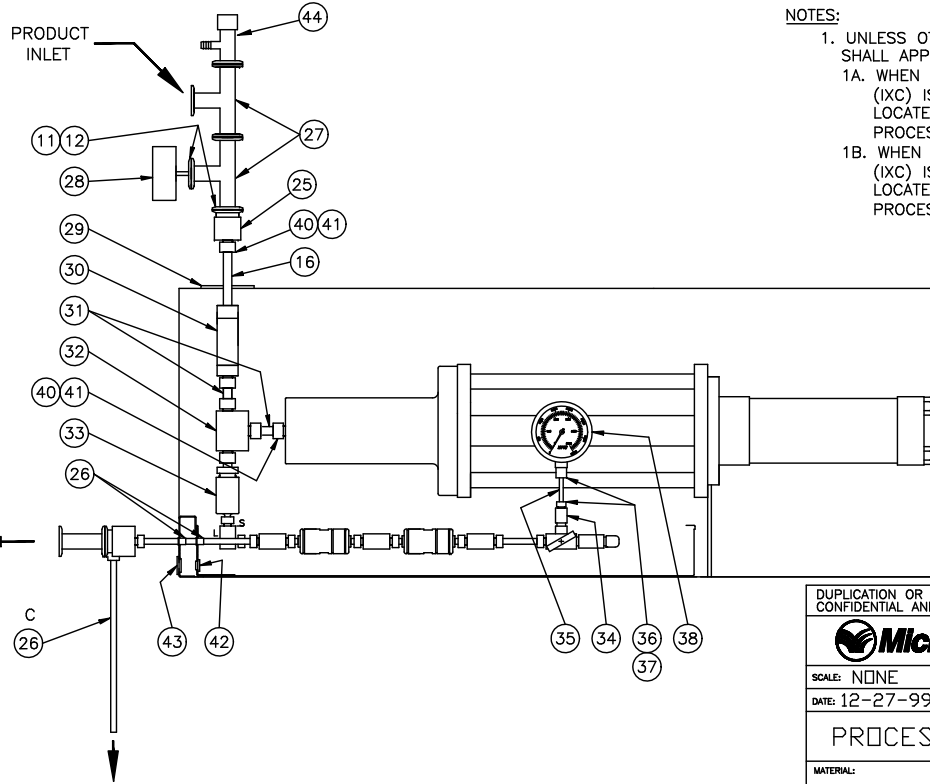
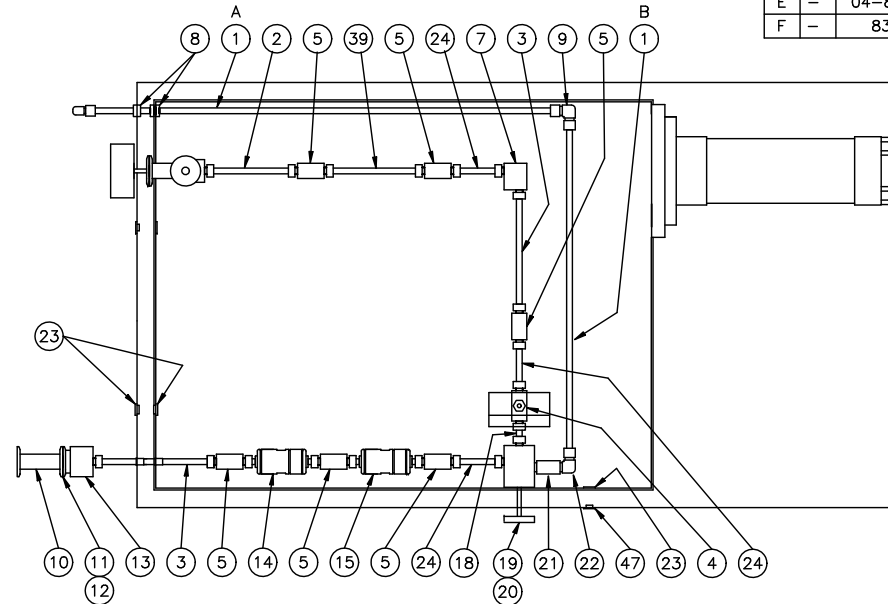


ITEM	QTY	PART No.	DESCRIPTION	MATERIAL	DWG No.
1	66*	71.0400	TUBE 3/8 OD	316 SS	--
2	2	25.0220	NIPPLE 3/8 HP X 8.00 LG	17-4 PH	--
3	2	25.0235	NIPPLE 3/8 HP X 9.50 LG	17-4 PH	--
4	1	25.0021	TEE 3/8 HP	17-4 PH	--
5	6	25.6202	COUPLING 3/8 HP	316 SS	--
6					
7	2	25.0016	ELBOW 3/8 HP	17-4 PH	--
8	2	65.1207	GROMMET 3/8 ID X 1.06 OD GROOVED	NEOPRENE	--
9	2	25.8730	ELBOW 3/8 TU	316 SS	--
10	1	56.0080	SPOOL PIECE 1 TC X 3.00 LG	316L SS	--
11	5	24.3600	GASKET 1.50 TC	VITON	--
12	5	24.3400	CLAMP 1.50 TC	300 SERIES SS	--
13	1	25.6021	ADAPTER 1 TC X 3/8 HP	316 SS	B-10758
14	2	--	APM ASSY 3/8 MALE ENDS	--	--
15	2	--	IXC ASSY 3/8 MALE ENDS	--	--
16	1	60.0650	NIPPLE 9/16 HP X 6.00 LG	17-4 PH	--
17					
18	1	25.0120	NIPPLE 3/8 HP X 3.00 LG	17-4 PH	--
19	1	26.3008	PRIMING VALVE 3/8 HP	316 SS	--
20	1	14.8215	EXTENSION FOR PRIMING VALVE 2.75 LG	300 SERIES SS	B-12078
21	1	25.6707	ADPT 3/8 HPM X 1/4 FNPT	316 SS	--
22	1	25.8715	ELBOW 3/8 TU X 1/4 MNPT	316 SS	--
23	REF.	20.1258	PLUG 3/4 OD	PLASTIC	--
24	3	25.0238	NIPPLE 3/8 HP X 4.88 LG	17-4 PH	--
25	1	25.6041	ADPT 9/16 HPF X 1.00 TC	316 SS	B-10758
26	REF.	66.4313	SNAP BUSHING .75 OD X .38 ID	PLASTIC	--
27	2	24.3202	TEE 1.00 TC	316L SS	--
28	1	24.2811	GAUGE 0-100	316L SS	--
29	REF.	54.5102	SPOOL HOLDER 9/16 DIA	300 SERIES SS	A-11692
30	1	802.00060	CHECK VALVE 9/16 HPF X 9/16 HPF	--	B-11921
31	2	60.0610	NIPPLE 9/16 HP X 4.00 LG	17-4 PH	--
32	1	60.0542	TEE 9/16 HP	17-4 PH	--
33	1	802.00004	CHECK VALVE OUT 9/16 HPM X 3/8 HPF	--	B-12998
34	1	25.6706	ADPT 3/8 HPM X 1/4 HPF	316 SS	--
35	1	15.3100	NIPPLE 1/4 HP X 3.00 LG	316 SS	--
36	2	15.2002	GLAND 1/4 HP	316 SS	--
37	1	15.2100	COLLAR 1/4 HP	316 SS	--
38	1	54.0008	GAUGE 0-60000	316 SS	B-11652
39	1	25.0210	NIPPLE 3/8 HP X 7.50 LG	17-4 PH	--
40	6	60.0501	GLAND 9/16 HP	316 SS	--
41	6	60.0510	COLLAR 9/16 HP	316 SS	--
42	REF.	60.0198	PLUG 9/16 OD	PLASTIC	--
43	REF.	20.1254	PLUG 7/8 OD	PLASTIC	--
44	1	24.2605	AIR PURGE VALVE	316L SS	--

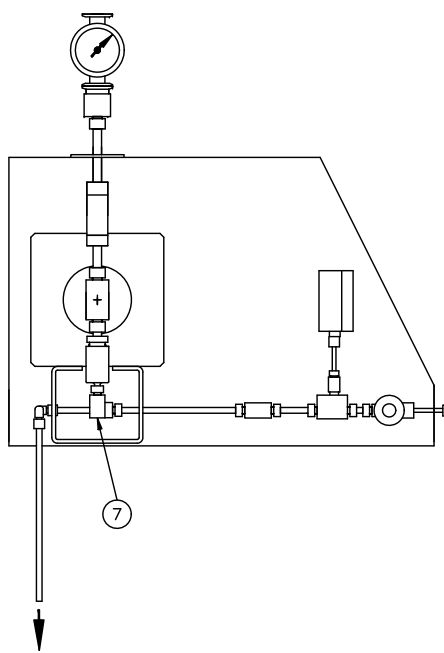
ITEM #1	QTY	LENGTH
	1	"A" 31.38 LG
	1	"B" 22.25 LG
	1	"C" 12.00 LG

REV	ZN	ECN NO.	DESCRIPTION	BY	DATE
C	--	00-043	CHANGED ITEMS 16,31 & 31	WPS	4-3-00
D	--	--	REVISED	JR	12-12-01
E	--	04-85	ADDED ITEM 44	WPS	3-29-05
F	--	83	ADDED LIST OF MATERIAL	WPS	7-29-05



NOTES:

- UNLESS OTHERWISE SPECIFIED, THE FOLLOWING SHALL APPLY:
 - WHEN A "Z" TYPE INTERACTION CHAMBER (IXC) IS BEING USED IT SHOULD BE LOCATED AFTER THE AUXILIARY PROCESSING MODULE (APM).
 - WHEN A "Y" TYPE INTERACTION CHAMBER (IXC) IS BEING USED IT SHOULD BE LOCATED BEFORE THE AUXILIARY PROCESSING MODULE (APM).



ASSY NO. 701.10042

DUPLICATION OR DISSEMINATION WITHOUT AUTHORIZATION PROHIBITED
CONFIDENTIAL AND PROPRIETARY PROPERTY OF:

Microfluidics 30 OSSISPEE RD.
P.O. BOX 9101
NEWTON, MA 02464-9101 USA

SCALE: NONE	TOLERANCES: $\angle = \pm 1/2$	$\times = \pm 1/32$	DRAWN BY JR
DATE: 12-27-99	.XX = $\pm .01$.XXX = $\pm .005$	F. N. 13099F

PROCESS PIPING M700 HP 1 PUMP

MATERIAL:	DRAWING NUMBER	REV.
	C-13099	F