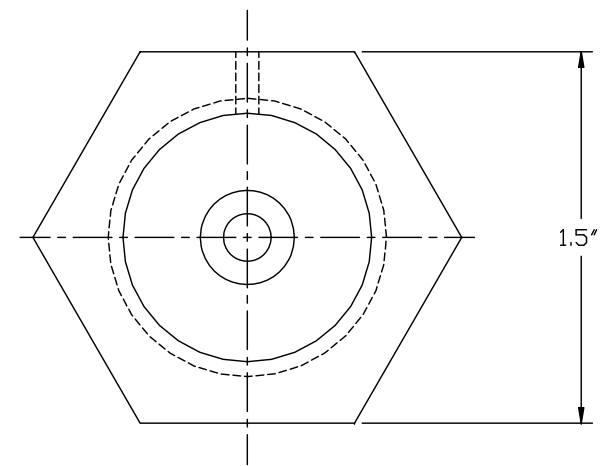
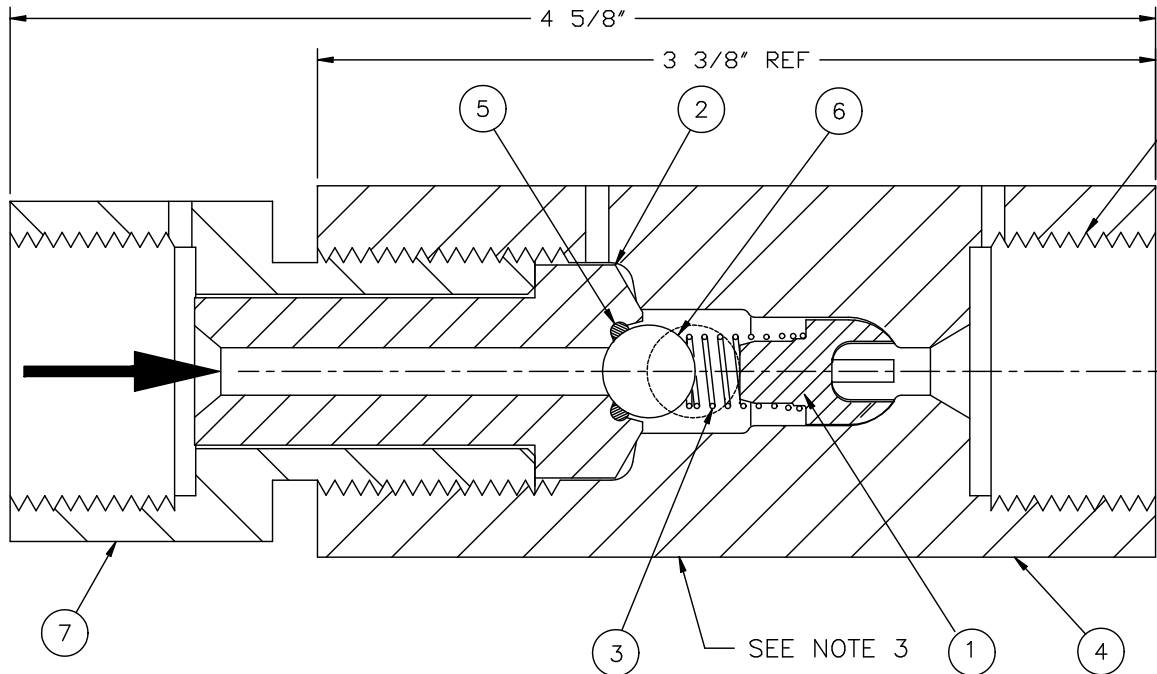


**NOTES:**

1. LIGHTLY LUBRICATE THREADS, THE SEAT WHERE IT CONTACTS THE BODY, AND THE GLAND WHERE IT CONTACTS THE SEAT.
2. 120 LB-FT TORQUE REQUIRED FOR A TIGHT SEAL.
3. STAMP "MAWP 40KSI" AND FLOW DIRECTIONAL ARROW ON FLAT OF THE BODY.

REV	ECN NO.	DESCRIPTION	BY	DATE
A	95-034	REVISED PER ECN	JNO	10APR95
B	96-029	REVISED PER ECN	DB	8APR96
C	97-029	REVISED PER ECN	JR	9APR97
D	04-14	REVISED PER ECN	WPS	5-25-04
E	74	ITEM 4 MATL WAS 316 SS	WPS	6-29-05



ITEM	QTY	DESCRIPTION	PART No.	DWG. No.
1	1	SPRING RETAINER #316 SS	24.4315	B-11092
2	1	SEAT, 40ksi #17-4 PH SS	24.4617	B-11966
3	1	SPRING #316 SS (.250 I.D. X .625 LG X .018 Ø)	24.4402	A-11516
4	1	BODY, 40ksi 17-4 PH	24.4111	B-11965
5	1	"O"-RING (UHMWPE) #011	24.4630	~
6	1	BALL, Ø 3/8 TUNGSTEN CARBIDE	24.4912	~
7	1	GLAND #316 SS	24.4210	~

ASSY NO 802.00060

DUPLICATION OR DISSEMINATION WITHOUT AUTHORIZATION PROHIBITED CONFIDENTIAL AND PROPRIETARY PROPERTY OF:			
		30 OSSIPEE RD. P.O. BOX 9101 NEWTON, MA 02464-9101 USA	
SCALE: 2/1 DATE: 16FEB95	TOLERANCES: X = ±1/2" XX = ±1/32" .XX = ±.01 .XXX = ±.005	DRAWN BY T. D'URSO F. N. 11921E	
<h2>CHECK VALVE ASS'Y, 9/16 HP</h2>			
MATERIAL: SEE CHART		DRAWING NUMBER B-11921	REV. E